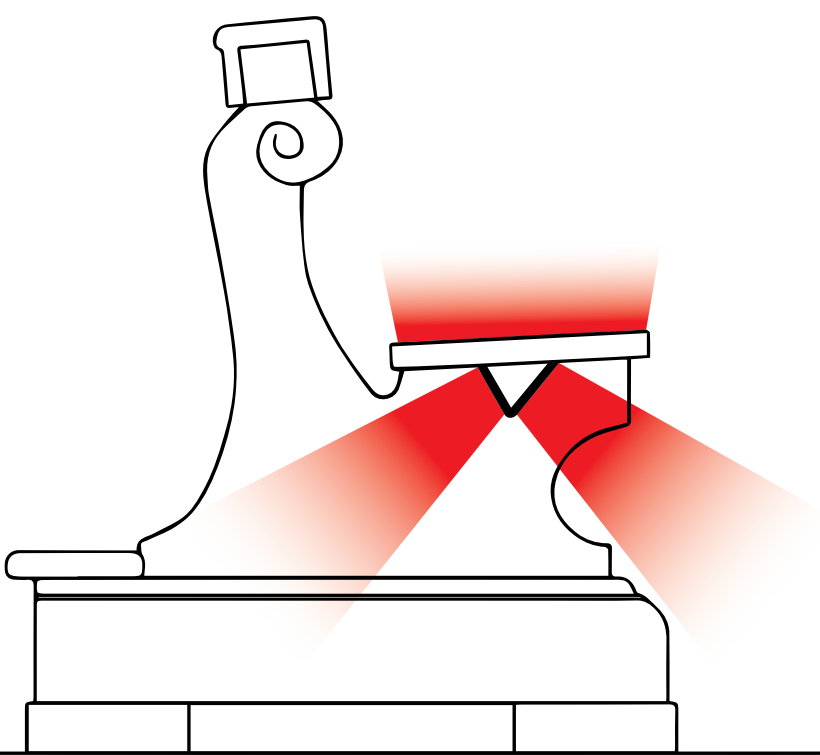




**RADIANT PANELS
FOR CHURCH
BENCHES**



RADIANT PANELS FOR CHURCH BENCHES



APPLICATION AREA

The product is optimal for heating of limited areas with benches in the church, being necessary in ambiances difficult to heat uniformly or where is impossible to install under floor heating. This system assures comfort to people sitting on the benches.

NO HARMFUL ELECTROMAGNETIC EMISSIONS

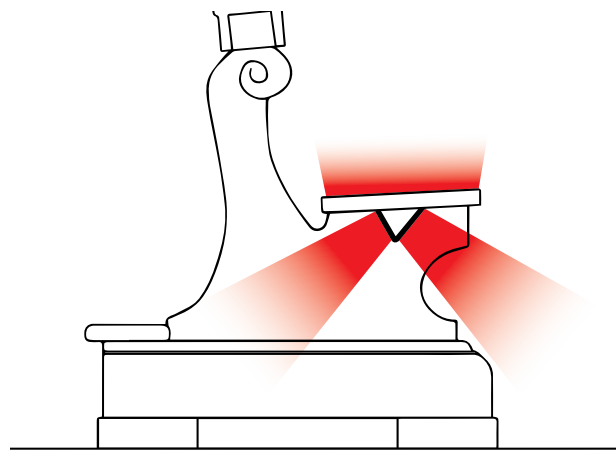
OPERATIONAL FEATURES

Radiant panels having a "V" shape bearing structure, made of varnished steel, are placed and fixed under benches. Electronic controller manages power consumption by commanding several panels at once, activating necessary areas.

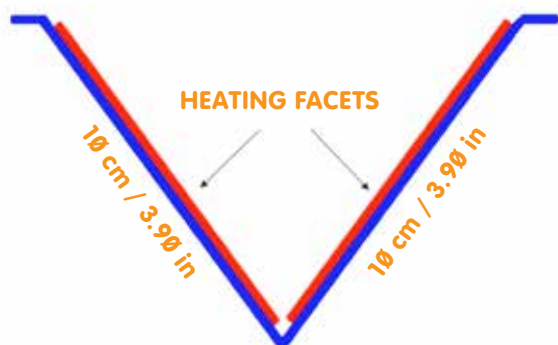
DO NOT USE IN BATHROOMS OR IN PRESENCE OF WATER

CARBON FIBER

Carbon fiber is flexible, does not oxidize, does not produce harmful electromagnetic fields during electricity flow, has no dimensional variations as the temperature changes nor deterioration of ohmic values. No wearing and no maintenance required. Its high resistivity permits significant energy savings.



DIAGRAMMATIC SECTION OF THE BENCH WITH ACTIVATED HEATING PANELS



TRANSVERSAL SECTION OF THE PANELS



PANEL FIXED UNDER THE BENCH

DESIGN

Radiant panel is "V" shaped in profile, the two heating facets width is 10,00 cm / 3,90 in. Heater length is customized.



T705 CONTROLLER (SEE ACCESSORIES)

MODEL	POWER SUPPLY	POWER	PROTECTION DEGREE	TEMPERATURE CONTROL	POWER CORD	DIMENSIONS
HTR_BENCH	230 Vac 50/60 Hz	150 W/m	IP67	T705 controller + safety thermostat of 70°C	H07 power cord, length 50-70 cm	Customized length

CONFORMITY



This product is manufactured in conformity with the electrical safety standards set by Low Voltage Directive 2014/35/EU. This product is in conformity with Electromagnetic Compatibility Directive 2014/30/EU, concerning the standards for electromagnetic emissions.