



HEATING SYSTEM  
INTERNATIONAL PATENT

**genius  
carbon**

THE NEW GENERATION OF HEAT



# HYDRA RADIATOR

# HYDRA RADIATOR



## CHARACTERISTICS

- Simple installation, it is sufficient just one electric outlet with adequate supply pressure.
- Electronic controller or On/Off switch.
- No connection to the water mains required.
- No maintenance required.
- High efficiency.
- Even heat distribution.
- No pollution.
- No CO2.

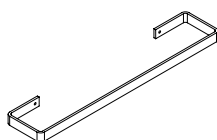
## NO HARMFULL ELECTROMAGNETIC EMISSIONS

### BODY

The body is made of thin porcelain tiles, inorganic compound that takes a solid shape after baking at a temperature of over 1.250°C. High efficiency regarding heat emissions and thermal inertia, possess heating quality typical for natural products.

### ACCESSORIES

Towel bar made of steel (PS10A)

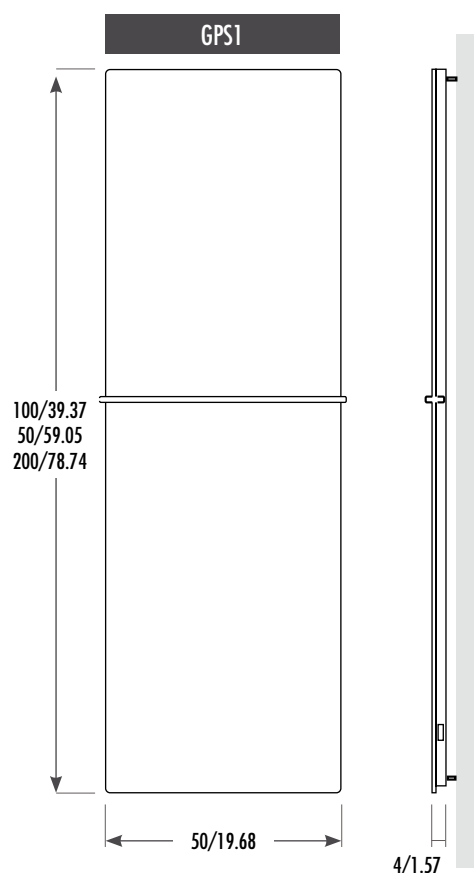


### CARBON FIBER

Carbon fiber is flexible, does not oxidize, does not produce harmful electromagnetic fields during electricity flow, has no dimensional variations as the temperature changes nor deterioration of ohmic values. No wearing and no maintenance required. Its high resistivity permits significant energy savings.

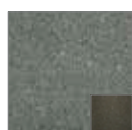
### TEMPERATURE CONTROL

The unit is equipped with an ambient probe and an electronic controller, reacting automatically and maintaining the desired temperatures even following various set points at different hours, to always have an optimum environmental well. Can be supplied with on / off without electronic control unit.

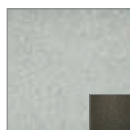


## COLORS CHART

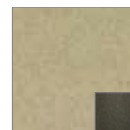
The manufacturer reserves the right to change the colors and the technical specifications of the products at any time without notice.



**AOA**  
Nero opaco ruvido  
Matt rough black  
Inver: 95835



**COC**  
Grigio opaco ruvido  
Matt rough grey  
Inver: 95835



**DOD**  
Sabbia opaco ruvido  
Matt rough beige  
Inver: 95835

MODEL	POWER SUPPLY	POWER	PROTECTION DEGREE	INSULATION RATE	TEMPERATURE CONTROL	WEIGHT (kg/lb.)	DIMENSIONS (cm/in)
GPS1.A	230 Vac 50/60 Hz	500 W	IP54	CLASS I	ON/OFF	9/19.84	100/39.37 x 50/19.68 x 4/1.57
GPS1.A.C	230 Vac 50/60 Hz	300/500 W	IP54	CLASS I	Electronic control unit	9/19.84	100/39.37 x 50/19.68 x 4/1.57
GPS1.B	230 Vac 50/60 Hz	750 W	IP54	CLASS I	ON/OFF	13/28.66	150/59.05 x 50/19.68 x 4/1.57
GPS1.B.C	230 Vac 50/60 Hz	450/750 W	IP54	CLASS I	Electronic control unit	13/28.66	150/59.05 x 50/19.68 x 4/1.57
GPS1.C	230 Vac 50/60 Hz	1000 W	IP54	CLASS I	ON/OFF	18/39.68	200/78.74 x 50/19.68 x 4/1.57
GPS1.C.C	230 Vac 50/60 Hz	650/1000 W	IP54	CLASS I	Electronic control unit	18/39.68	200/78.74 x 50/19.68 x 4/1.57

## CONFORMITY



This product is manufactured in conformity with the electrical safety standards set by Low Voltage Directive 2014/35/EU. This product is in conformity with Electromagnetic Compatibility Directive 2014/30/EU, concerning the standards for electromagnetic emissions.

Thermal Technology powered by Carbon Fiber Heating SRL - 417075, Borş, Parc Industrial Borş, Nr. 1C, jud. Bihor, Romania  
Phone: + 39 0423 858589 - [www.thermaltt.com](http://www.thermaltt.com) - [info@thermaltt.com](mailto:info@thermaltt.com)