



**HEATING  
DECK FLOOR**

# HEATING DECK FLOOR



## APPLICATION AREA

Deck floor system guarantees comfort during colder seasons, ensuring a hot ambiance on protected terraces, porticoes and verandas, maintaining a cozy temperature.

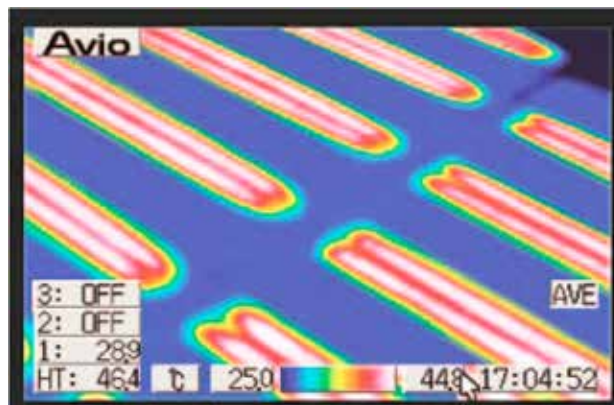
## NO HARMFUL ELECTROMAGNETIC EMISSIONS

## FUNCTIONAL CHARACTERISTICS

Deck heating floor is simple to install, the heating decks, alternated with normal decks, connected between them by aim of male/female connectors, each heating deck is equipped with, passing through the spar spaces under decking. Up to 26 heating decks can be connected to each other, and then linked to power supply by aim of appropriate extension cord, 3m length.

## CARBON FIBER

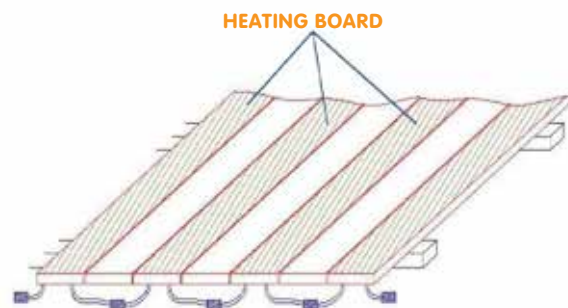
Carbon fiber is flexible, does not oxidize, does not produce harmful electromagnetic fields during electricity flow, has no dimensional variations as the temperature changes nor deterioration of ohmic values. No wearing and no maintenance required. Its high resistivity permits significant energy savings.



INFRARED THERMOGRAPHY



T705 ELECTRONIC CONTROLLER



CONNECTOR SEQUENCE UNDER FLOOR



HEATING DECK AND ITS CONNECTORS

## STRATIFICATION

Stratification starting from exterior layer:

- Boards made of composite wood 162x22 cm (row wood and polyolefinic ecological plastic powder mix).
- Thermal insulation on the bottom side.
- Fireproof coverage.
- Carbon fiber resistors.

## TEMPERATURE CONTROL

Temperature control of several areas is done by aim of T705 controller (see accessories) and temperature probe commanding automatic activation and deactivation of the until reaching of the desired temperature.

MODEL	POWER SUPPLY	POWER	PROTECTION DEGREE	TEMPERATURE CONTROL	CABLES AND CONNECTORS	DIMENSIONE (cm/in)
HTR_DECK	230 Vac 50/60 Hz max 8A	150W/m <sup>2</sup> 100W/pz.	IP54	Electronic control (see accessories)	H07 RNF 2G cable IP54 connectors	162x22x3

CONFORMITY



This product is manufactured in conformity with the electrical safety standards set by Low Voltage Directive 2014/35/EU. This product is in conformity with Electromagnetic Compatibility Directive 2014/30/EU, concerning the standards for electromagnetic emissions.

Thermal Technology powered by Carbon Fiber Heating SRL - 417075, Borş, Parc Industrial Borş, Nr. 1C, jud. Bihor, Romania  
Phone: + 39 0423 858589 - [www.thermaltt.com](http://www.thermaltt.com) - [info@thermaltt.com](mailto:info@thermaltt.com)